

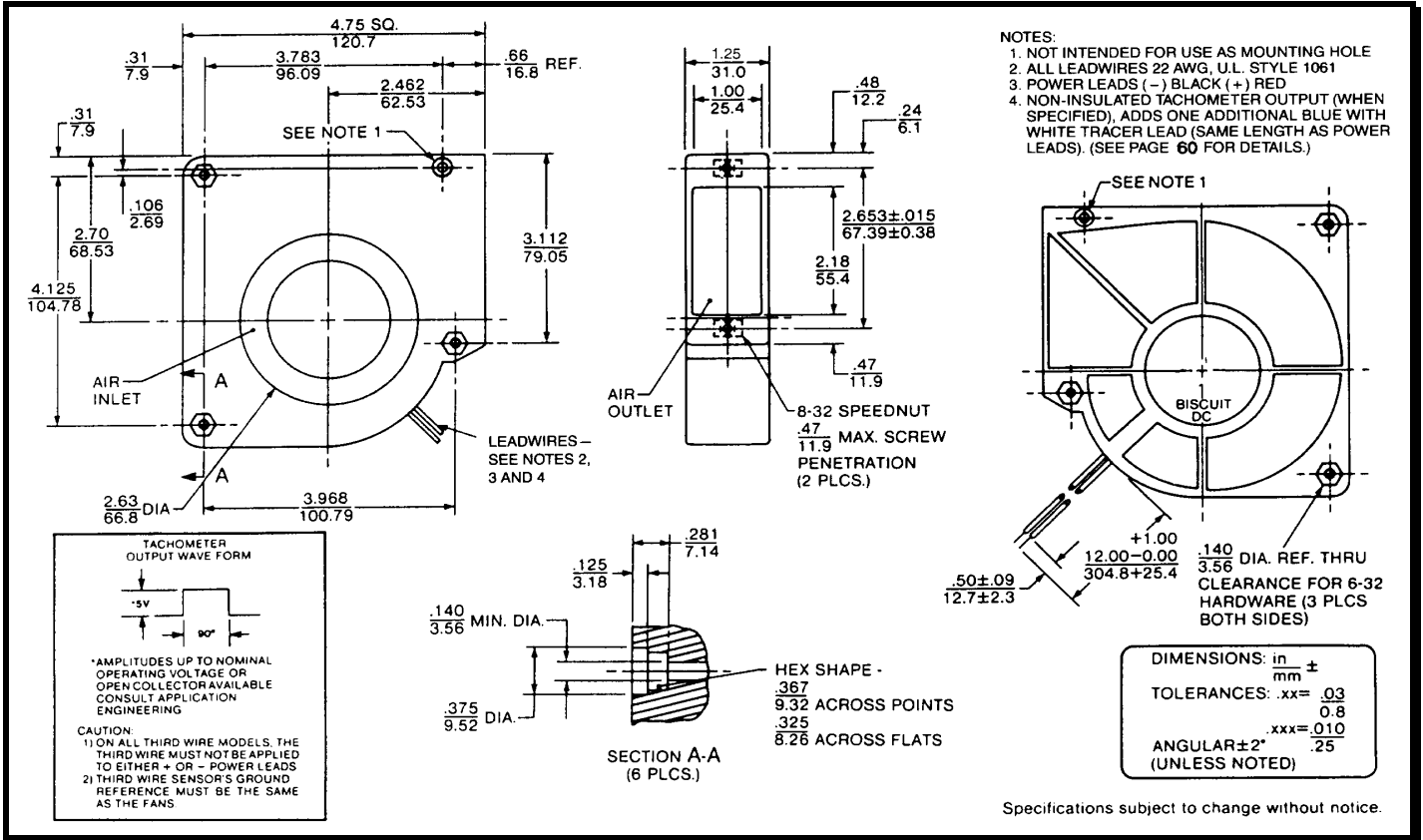
SPECIFICATIONS

Model Number: BD48B3
Part Number: 19030637A

Rev: 01
April 10, 2017



Mechanical Drawing:



Motor:

Nominal Voltage = 48 vdc
 Operating Voltage Range = 24 - 56 vdc
 Nominal Running Current = 0.25 amps
 Locked Rotor Current = 0.8 amps
 Running Power = 12.0 watts
 Average Speed = 3040 rpm
 Bearings = Ball
 Air Flow = 24.3 cfm
 Noise = 51.2

Construction:

Venturi: Plastic, Black, UL94V-0
 Propeller: Plastic, Black, UL94V-0

Agency Approvals:

UL, CUL, CE

Life Expectancy:

This fan is designed for continuous duty life of 52,000 hours at 70°C

Additional Features:

Brushless DC Motor
 Polarity Protected
 Locked Rotor Protection
 Automatic Restart Capability
 Operating Temperature: -10°C to +70°C
 Storage Temperature: -40°C to +85°C

Termination:

12" Lead wires, 22 AWG, UL1061

Red: Power (+)

Black: Return (-)

PQ Curve:

